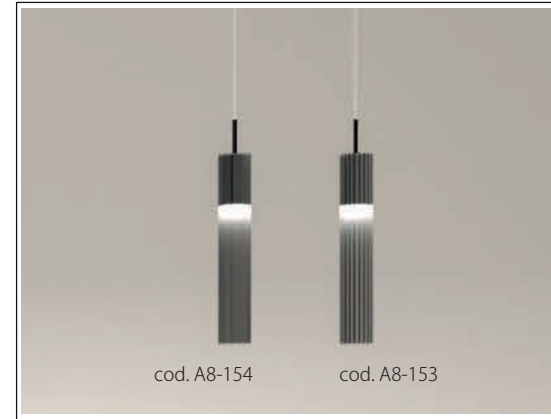


# Cristal

## sospensione / hanging

ISTRUZIONI PER L'INSTALLAZIONE  
INSTRUCTIONS FOR INSTALLING  
MODE D'INSTALLATION  
MONTAGEANWEISUNGEN  
INSTRUCTIES VOOR HET INSTALLEREN  
INSTRUCCIONES PARA INSTALACION



cod. A8-154

cod. A8-153

**ATTENZIONE:**

La sicurezza dell'apparecchio è garantita solo dall'uso appropriato delle seguenti istruzioni, pertanto è necessario rispettarle e conservarle.

**WARNING:**

Device security is guaranteed by the appropriate use of the following directions, therefore it is required to follow and to keep them.

**ATTENTION:**

La sécurité de l'appareil n'est garantie que dans le respect des instructions suivantes, Nous vous conseillons donc de les bien conserver.

**ACHTUNG:**

Die Gerätsicherheit ist versichert unter der Voraussetzung, daß die folgenden Einleitungen richtig verwendet und eingehalten werden. Deshalb ist es notwendig, sie zu bewahren

**ATTENTIE:**

De veiligheid van het armatuur is alleen gegarandeerd bij het juist toepassen van de volgende montage-voorschriften.

**ATENCIÓN:**

La seguridad del aparato se garantiza solo cumpliendo cuidadosamente las siguientes instrucciones; por ello, es necesario conservarlas.



**I** Apparecchio predisposto per il montaggio diretto su superfici normalmente infiammabili.

**GB** Device fitted for directly mounting onto normally inflammable surfaces.

**F** Appareil réalisé pour le montage direct sur superficies normalement inflammables.

**D** Leuchte geeignet zur Montage auf normalerweise Flächen.

**NL** Toestellen voorzien voor montage op normaal brandbare oppervlakten.

**E** Aparato preparado para ser montado directamente en superficies inflamables.

**I** Apparecchio di classe I

**GB** Class I luminaire

**F** Appareil de classe I

**D** Garäet Klasse II

**NL** Toestellen van Klasse I

**E** Aparato de clase I

**I** Gruppo di rischio 1, secondo norma EN 62471:2008

**GB** Risk group 1, in compliance with standard EN 62471:2008

**F** Groupe de risque 1, suivant la norme EN 62471:2008

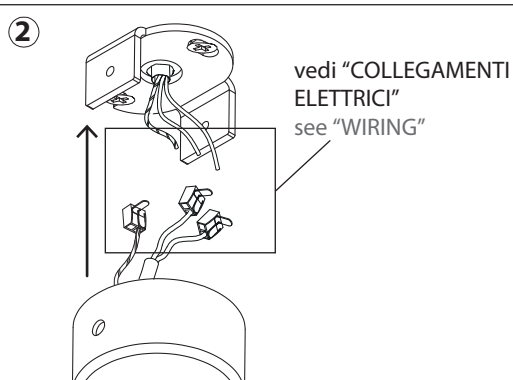
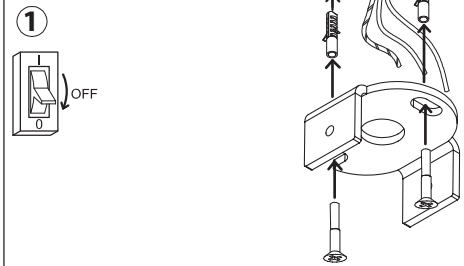
**D** Risikogruppe 1, gemäß Vorschrift EN 62471:2008

**NL** Risicogroep 1, volgens de norm EN 62471:2008

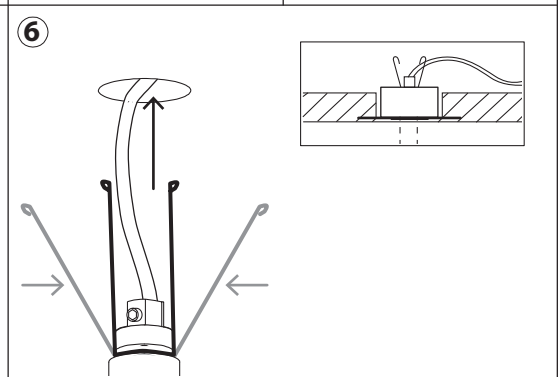
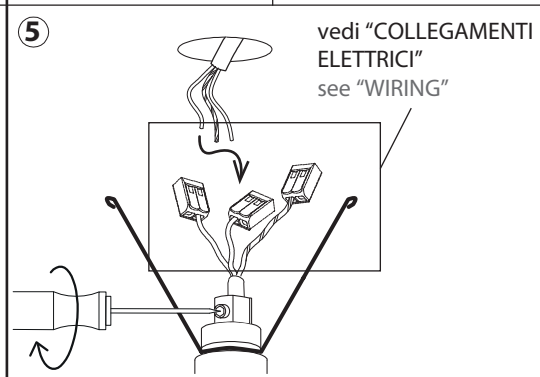
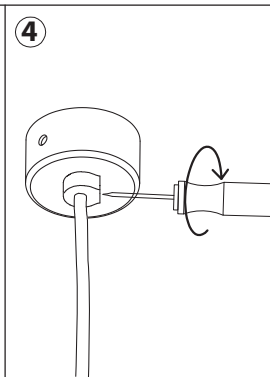
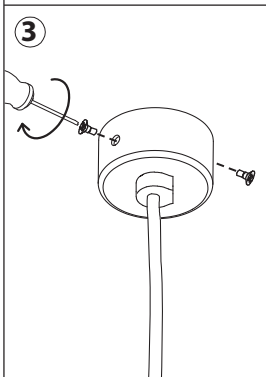
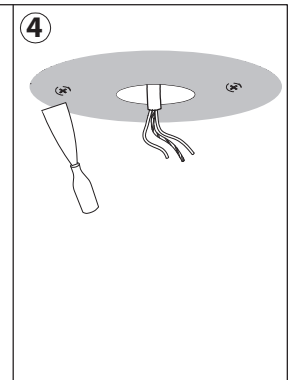
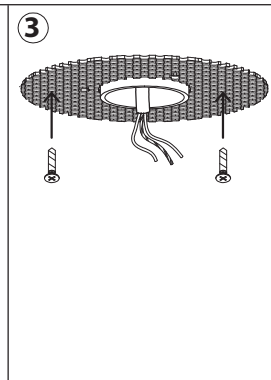
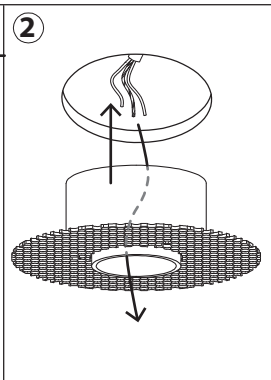
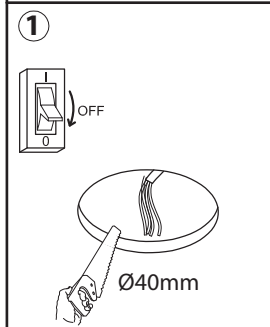
**E** Grupo de riesgo 1, según norma EN 62471:2008

**IP40**

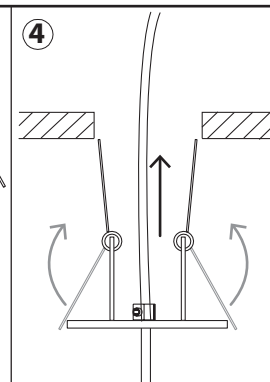
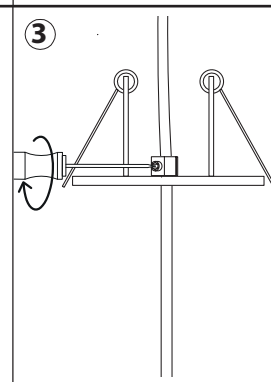
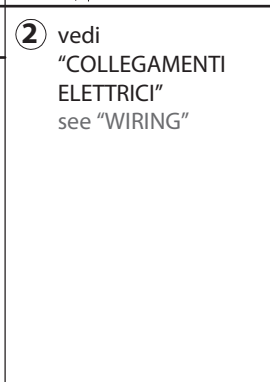
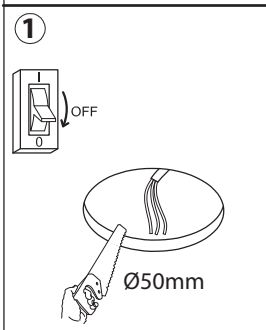
cod.A8-153...+A6-019E  
A8-154...+A6-019E



cod.A8-153...+A6-019U  
A8-154...+A6-019U

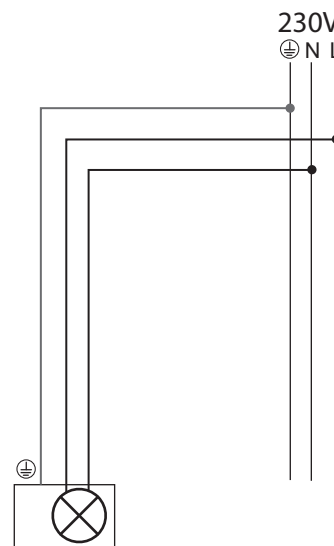


cod.A8-153...+A6-019B  
A8-154...+A6-019B



## Collegamenti elettrici / Wiring

LED PAR11 GU10 ON-OFF



LED PAR11 GU10 dimmerabile  
TAGLIO DI FASE  
PHASE CUT DIMMER

